

NTM 50/60 270 kW → P20P 20x10 (TEST NA MIZI)
 ULEK PRI 4000 RPM → 3,5 kg (20A)
 5000 RPM → 5,6 kg (+ 40A)

SIMULACJA Z UPOBIER
NTM 50/60 270KV

548

Restricted Demo Version

sign-up for full version from only \$1.49

all data without guarantee - Accuracy: +/-10%



propCalc - Propeller Calculator

MODELLFLUG
TIPPS.DB
PLATZ 1
Modellflug Portal

Follow

Follow

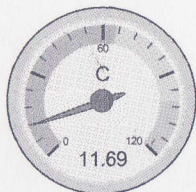
sign-up for full version from only \$1.49

Login: eMail password Login

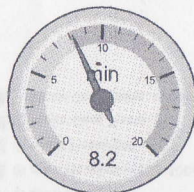
☐ remember me - [Forgot password?](#)

News | Help | Language: english

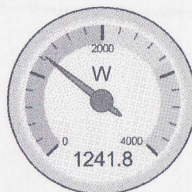
General	Motor Cooling: medium ▼	# of Motors: 1 (on same Battery)	Model Weight: 4400 g incl. Drive ▼ 155.2 oz	Wing Area: 50 dm² 775 in²	Field Elevation 500 m ASL 1640 ft ASL	Air Temperature 25 °C 77 °F	Pressure (QNH): 1013 hPa 29.91 inHg	
Battery Cell	Type (Cont. / max. C) - charge state: select... ▼ - normal ▼	Configuration: 6 S 1 P	Cell Capacity: 5000 mAh 5000 mAh total	max. discharge: 85% ▼	Resistance: 0.0022 Ohm	Voltage: 3.7 V	C-Rate: 65 C cont. 100 C max	Weight: 140 g 4.9 oz
Controller	Type: select... ▼	Current: 90 A cont. 90 A max	Resistance: 0.003 Ohm	Weight: 115 g 4.1 oz	Wire extension battery: AWG10=5.27mm² ▼	Length: 0 mm 0 inch	Wire extension motor: AWG10=5.27mm² ▼	Length: 0 mm 0 inch
Motor	Manufacturer - Type (Kv): Turnigy ▼ select... ▼ search... Prop-Kv-Wizard	KV (w/o torque): 270 rpm/V	no-load Current: 1.7 A @ 10 V	Limit (up to 15s): 2860 W ▼	Resistance: 0.027 Ohm	Case Length: 67 mm 2.64 inch	# mag. Poles: 10	Weight: 706 g 24.9 oz
Propeller	Type - yoke twist: custom ▼ - 0° ▼	Diameter: 20 inch 508 mm	Pitch: 10 inch 254 mm	# Blades: 2	PConst / TConst: 1.3 / 1.0	Gear Ratio: 1 : 1	Flight Speed: 0 km/h 0 mph	<input type="button" value="calculate"/>



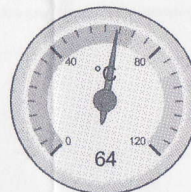
Load:



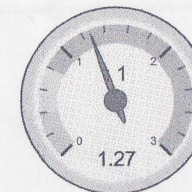
Mixed Flight Time:



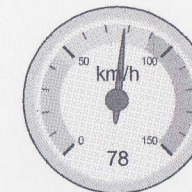
electric Power:



est. Temperature:



Thrust-Weight:



Pitch Speed:

Remarks:

- The Pitch Speed should be at least twice as large as the estimated Stall Speed. Increase your propeller pitch.

Battery		Motor @ Optimum Efficiency		Motor @ Maximum		Propeller		Total Drive		Airplane	
Load:	11.69 C	Current:	35.73 A	Current:	58.43 A	Static Thrust:	5579 g	Drive Weight:	1827 g	All-up Weight:	4400 g
Voltage:	21.43 V	Voltage:	21.62 V	Voltage:	21.25 V		196.8 oz		64.4 oz		155.2 oz
Rated Voltage:	22.20 V	Revolutions*:	5372 rpm	Revolutions*:	5091 rpm	Revolutions*:	5091 rpm	Power-Weight:	295 W/kg	Wing Load:	88 g/dm²
Energy:	111 Wh	electric Power:	772.5 W	electric Power:	1241.8 W	Stall Thrust:	5203 g		134 W/lb		28.8 oz/ft²
Total Capacity:	5000 mAh	mech. Power:	695.3 W	mech. Power:	1100.5 W		183.5 oz	Thrust-Weight:	1.27 : 1	Cubic Wing Load:	12.4
Used Capacity:	4250 mAh	Efficiency:	90.0 %	Efficiency:	88.6 %	Thrust @ 0 km/h:	5579 g	P(in) @ max:	1297.1 W	est. Stall Speed:	45 km/h
min. Flight Time:	4.4 min			est. Temperature:	64 °C	Thrust @ 0 mph:	196.8 oz	P(out) @ max:	1100.5 W		28 mph
Mixed Flight Time:	8.2 min				147 °F	Pitch Speed:	78 km/h	Efficiency @ max:	84.8 %	est. Speed (level):	71 km/h
Weight:	840 g						48 mph				44 mph

Shop Now

Bang good
Shipping with DHL
Best Bang for Your Buck

NTM 50/60 270KV
PROP 20x10
TOK 35,7A
MAX TOK 58,43A
MOČ 1240W 88,6%

TEST NA STOJALU

RTČAJI cca 20A → 4000 $\frac{1}{min}$
cca 40A → 5000 $\frac{1}{min}$

PORABA 5 MIN → 2,4Ah

PL MORBY JOKER 5060-8 377
PROP 17x10
TOK 35,6A
MAX TOK 71,20A
MOČ 1437W 87,4%

PODATKI TELEMETRIJE

TOK POUČEJE 19A
MAX TOK 68,5A (68,8)

LETENJE 14 minut

VOLTI 25,1V → 20,4V
POUČEJE 22,5V

PORABA 4438 mAh (14 minut)

HITOST MAX 129 km/h
POUČEJE 32 km/h